

# 5155 LOCHSIDE DRIVE

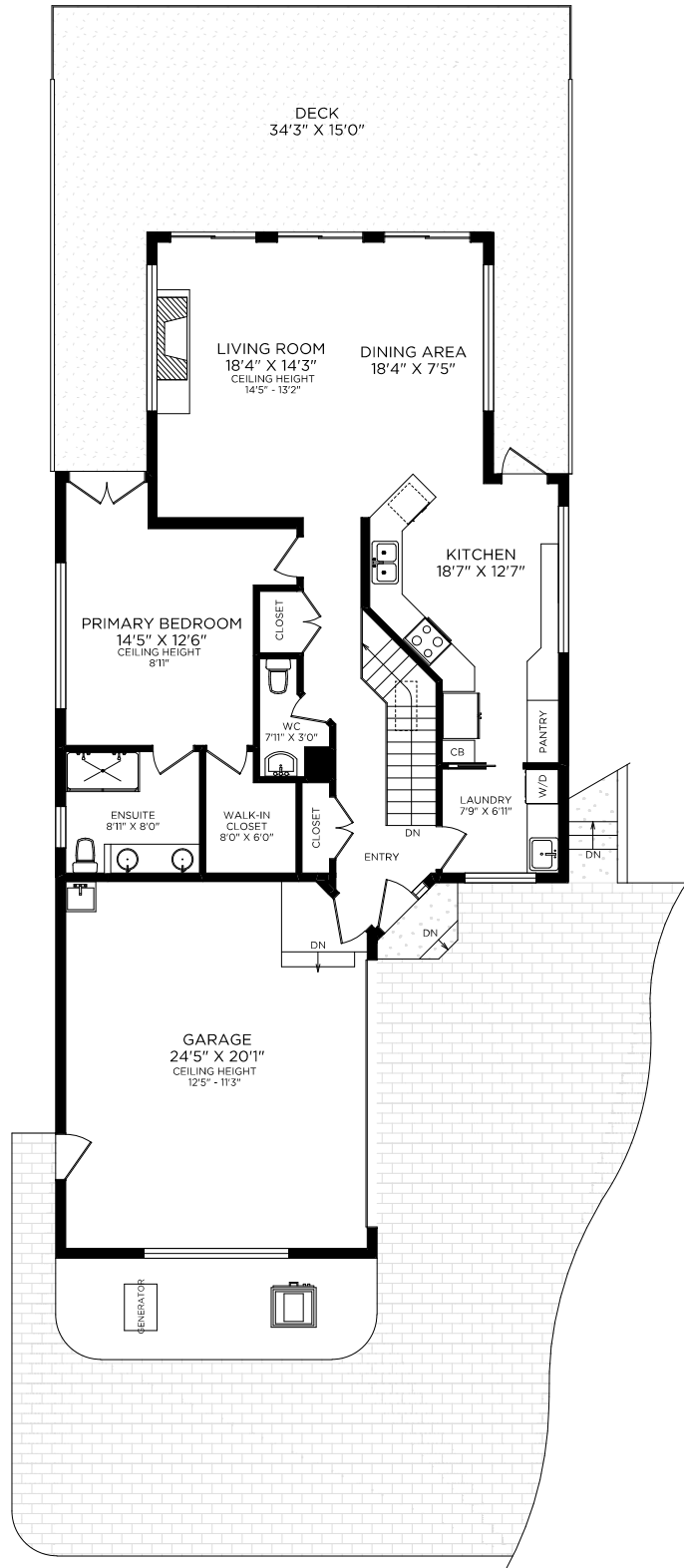
Document prepared for the exclusive use of:

**Roxanne Brass\***

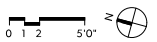
\*Personal Real Estate Corporation



**RE/MAX**  
**CAMOSUN**  
Each Office Independently Owned and Operated



## MAIN FLOOR



Floor	Finished	Unfinished	Total	Other Areas	
Main	1317	0	1317	Garage	529
Lower	1317	0	1317	Patio	662
<b>Total</b>	<b>2634</b>	<b>0</b>	<b>2634</b>	Deck	711

**REALFOTO**

250 388 6998  
orders@realfoto.ca

Measured 05/08/2026 by C.O.

All information furnished regarding this property is from sources deemed reliable but no warranty or representation is made to the accuracy thereof. Purchaser to verify measurements if important.

# 5155 LOCHSIDE DRIVE

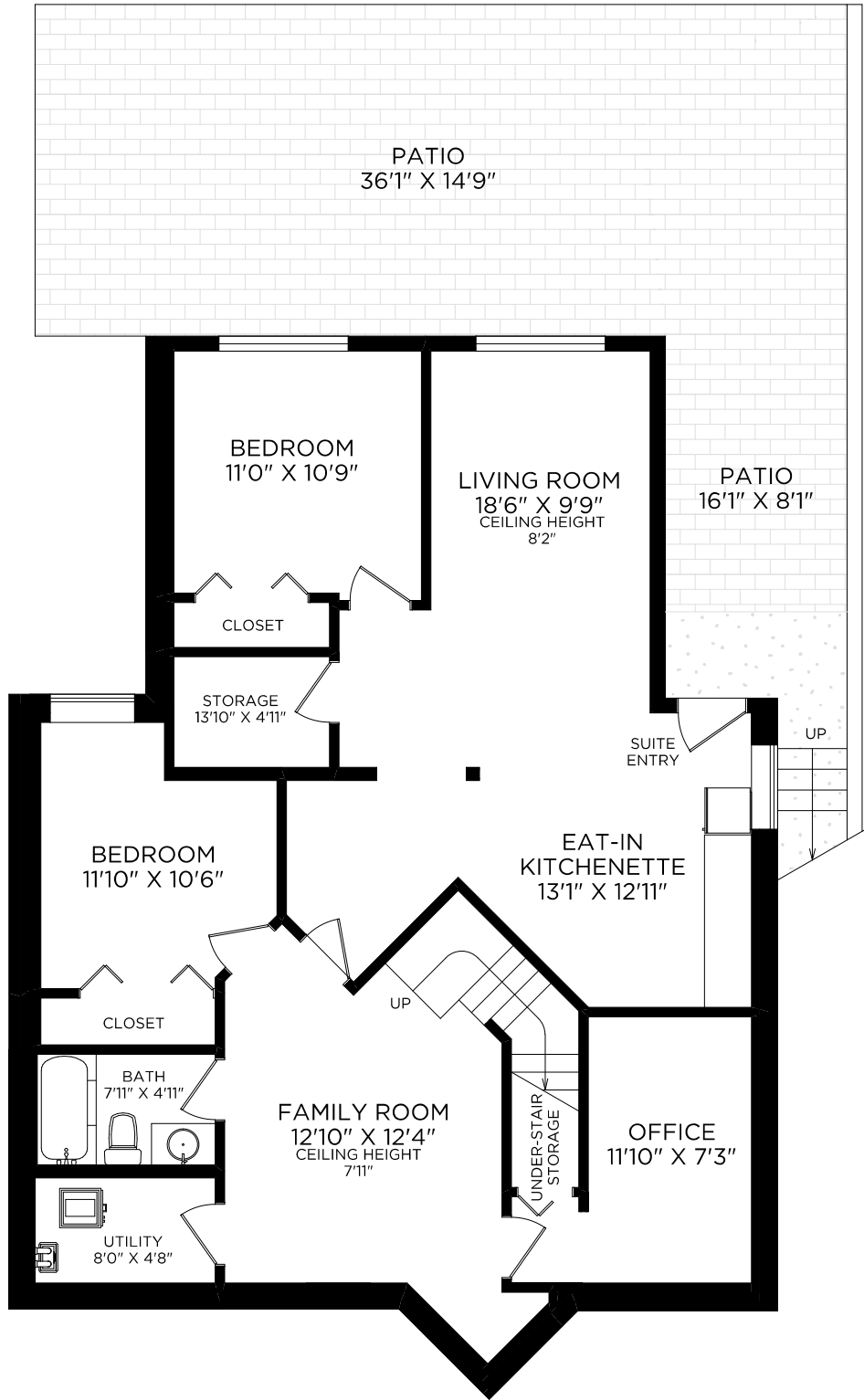
Document prepared for the exclusive use of:

**Roxanne Brass\***

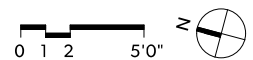
\*Personal Real Estate Corporation



**RE/MAX**  
**CAMOSUN**  
Each Office Independently Owned and Operated



## LOWER FLOOR



Floor	Finished	Unfinished	Total	Other Areas	
Main	1317	0	1317	Garage	529
Lower	1317	0	1317	Patio	662
<b>Total</b>	<b>2634</b>	<b>0</b>	<b>2634</b>	Deck	711

**REALFOTO**

250 388 6998  
orders@realfoto.ca

Measured 05/08/2026 by C.O.

All information furnished regarding this property is from sources deemed reliable but no warranty or representation is made to the accuracy thereof. Purchaser to verify measurements if important.