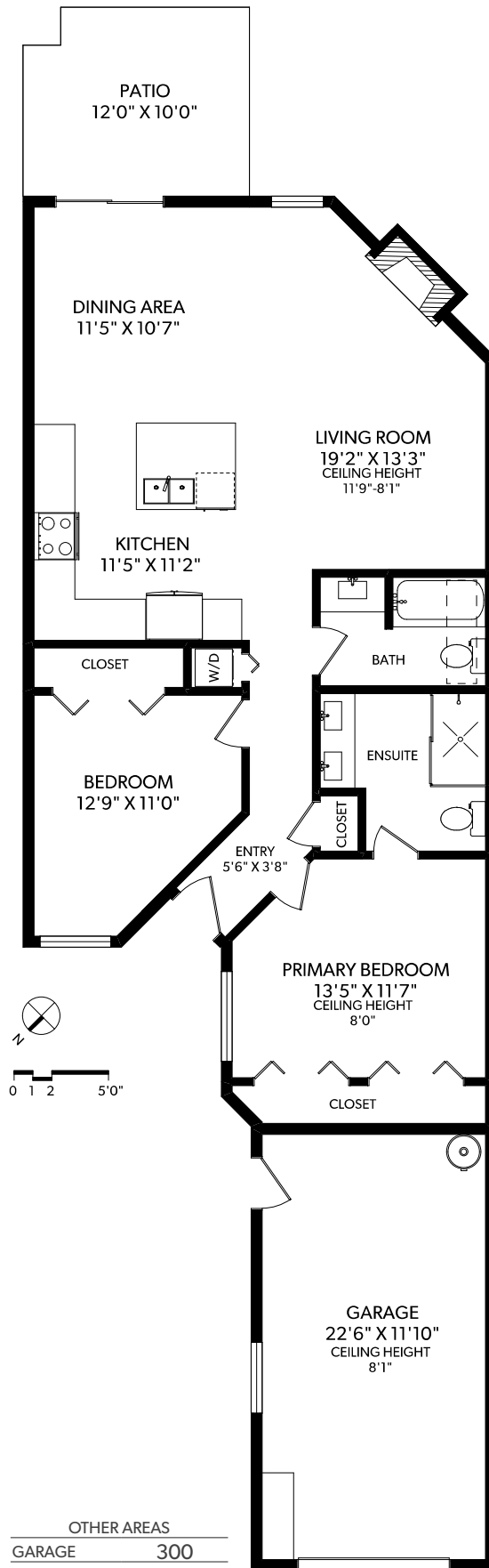


# MAIN FLOOR



FLOOR	FINISHED	UNFINISHED	TOTAL	OTHER AREAS
MAIN	1096	0	1096	GARAGE 300
TOTAL	1096	0	1096	PATIO 116



## 14-5156 CORDOVA BAY ROAD

DOCUMENT PREPARED FOR THE EXCLUSIVE USE OF

### ROXANNE BRASS\*

250-388-6998  
ORDERS@REALFOTO.CA

\*PERSONAL REAL ESTATE CORPORATION  
MEASURED 03/11/2022 BY CLAY OVINGE



**RE/MAX**  
CAMOSUN  
Each Office Independently Owned and Operated

All information furnished regarding this property is from sources deemed reliable but no warranty or representation is made to the accuracy thereof. Purchaser to verify measurements if important.